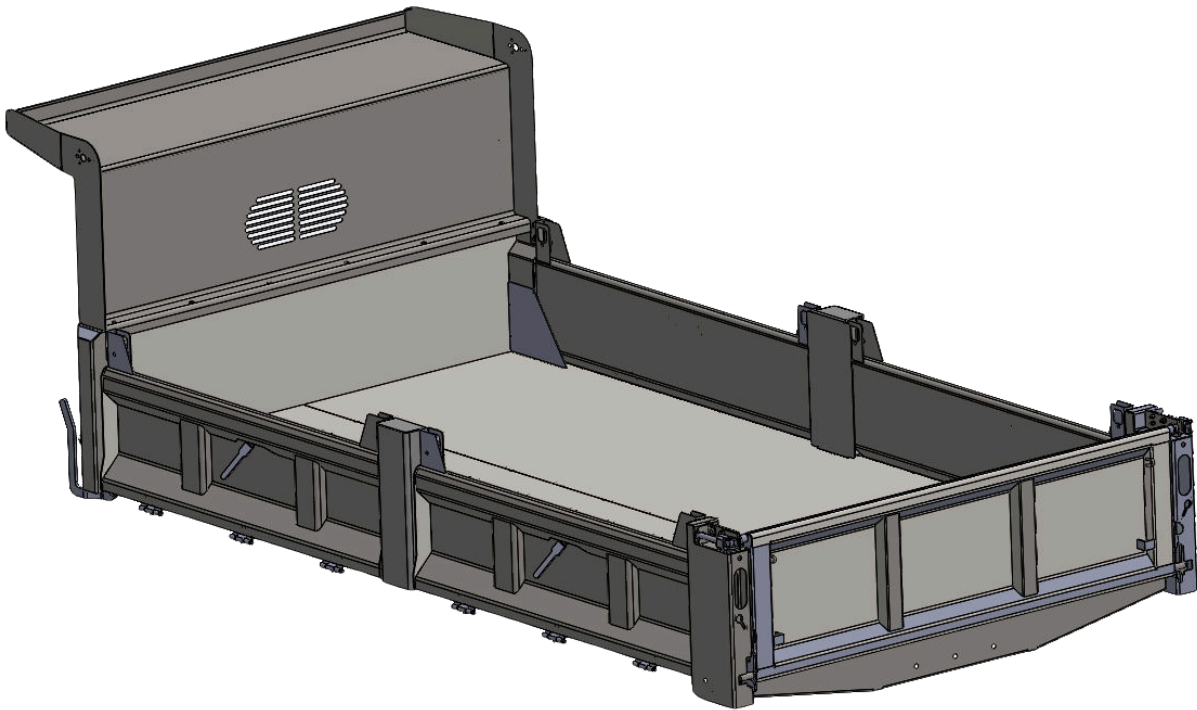
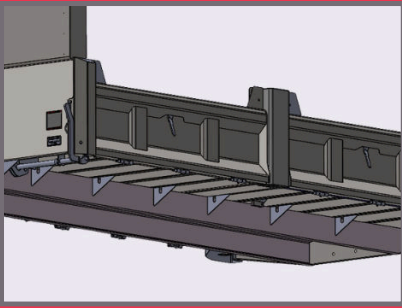




CONTRACTOR

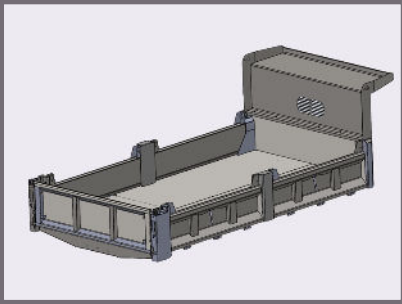


Rugby's Contractor Bodies deliver the clean, modern look customers want with the proven durability they depend on. Designed with convenient fold-down sides, they make loading and unloading materials fast and efficient on any jobsite. Available in 12', 14', and 16' lengths with volume capacities from 4 to 8 cubic yards, they offer the right fit for a wide range of applications. And like every Rugby product, our Contractor Bodies are backed by an exceptional 3-year warranty for lasting peace of mind.



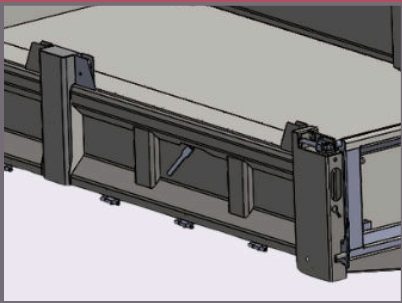
OPTIMIZED DESIGN

3" I-beam crossmembers spaced for optimal load support, stacked on 7" structural channel longmembers



DURABLE CONSTRUCTION

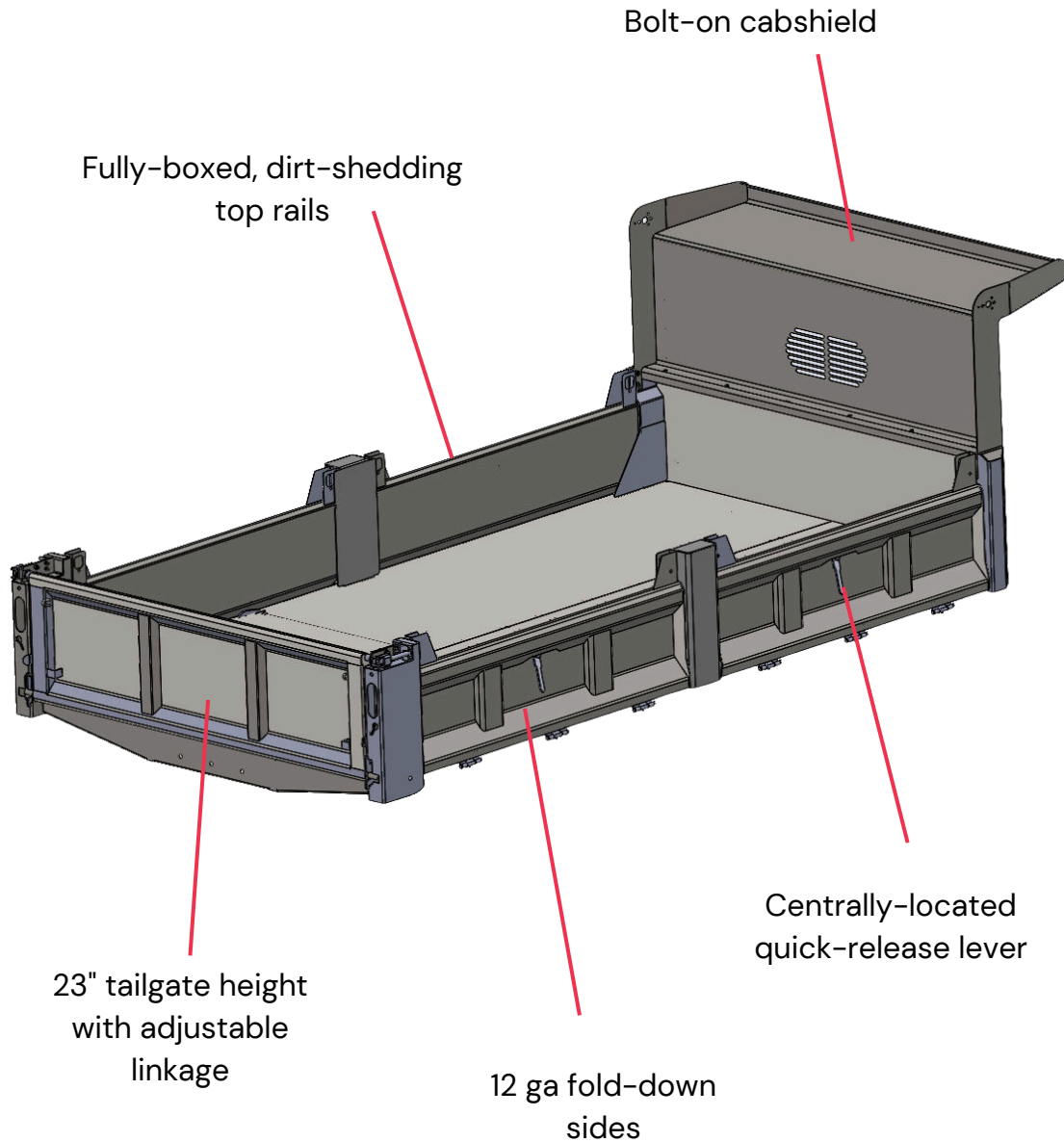
- Front: 10 gauge
- Tailgate: double walled (10 ga inner/14 ga outer)
- Sides: 12 ga HSLAS grade 50



FOLD-DOWN SIDES

Add versatility and quick-release lever helps make loading materials a breeze

BACKED BY OUR
3 YEAR
WARRANTY



CONTRACTOR			
Outside Length	12' 3"	14' 3"	16' 3"
Side Height	17"	17"	17"
Tailgate Height	23"	23"	23"
Materials	Carbon Steel		
Body Capacity	4 - 5 cu yds	5 - 6 cu yds	6 - 8 cu yds
Cabshield	1/4	1/2	1/2
Body Weight	2200	2500	2780
Compatible Hoists	SR4020B, SR5020B, SF620	SF628 or SF5520	SF628 or SF5520