



ADVISORY BULLETIN

Rugby RT520 HYD VALVE RVC SHIFTER

Attn: Rugby Sales & Service-All Rugby Customers

Bulletin 2116120 Rev A

Release Date: 6/15/2018

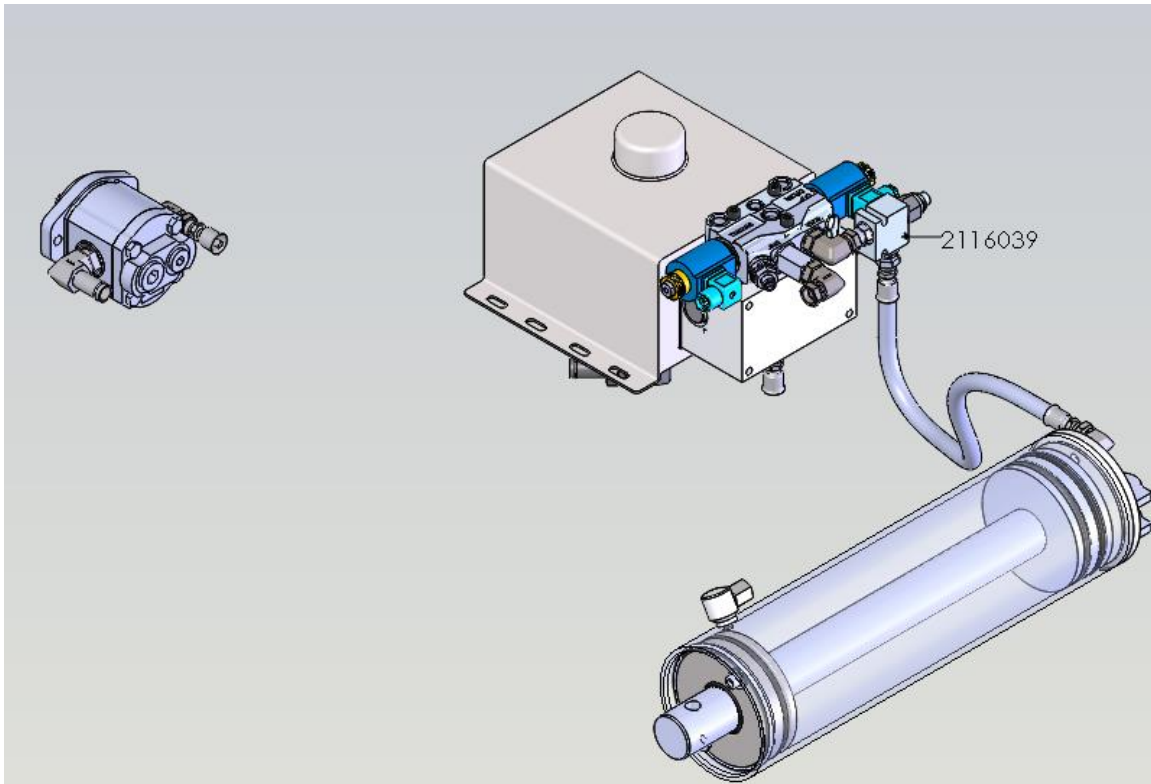
Models Affected: Rugby RT520 Hydraulic System; RT520 Flow Control Kit 2116039

Description: Some applications such as lowering a partially or fully loaded body require the down cycle to be slowed down; otherwise oil is returned too quickly to the reservoir causing oil to discharge from the cap.

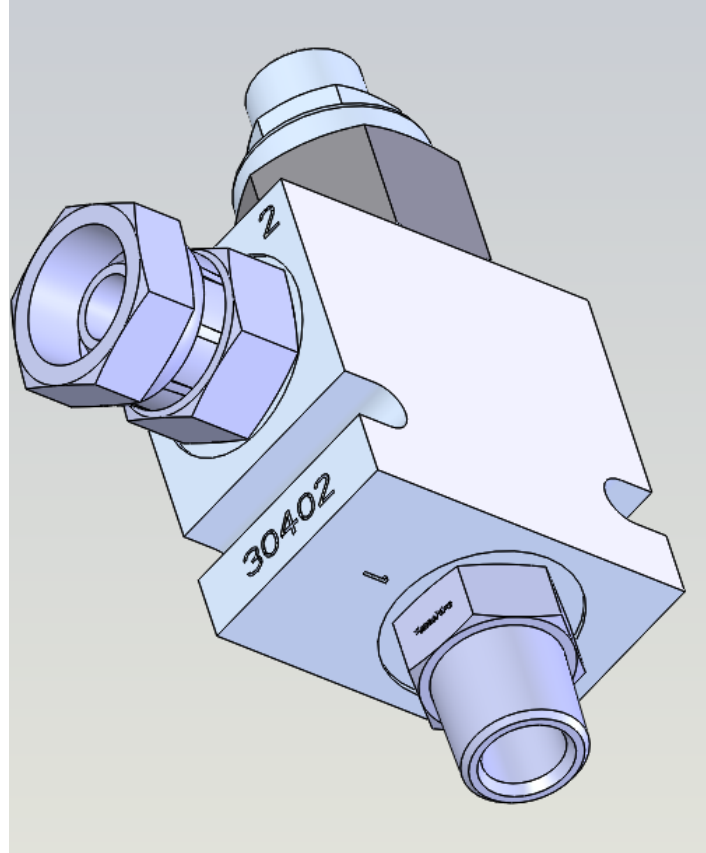
Solution: Install a flow control from Rugby to lessen the down cycle speed.

Installation of Kit 2116039:

Install 2116039 as shown below. Connect 20116039 port # 1 to the valve and 20116039 port #2 to the hose coming from the cylinder base.



Rugby Manufacturing Co.
515 1st St. NE – Rugby, ND 58368
Tel: 701 776 5722 – Fax: 701 776 6235 – www.rugbymfg.com



Vavle 2116039 showing ports #1 and #2.